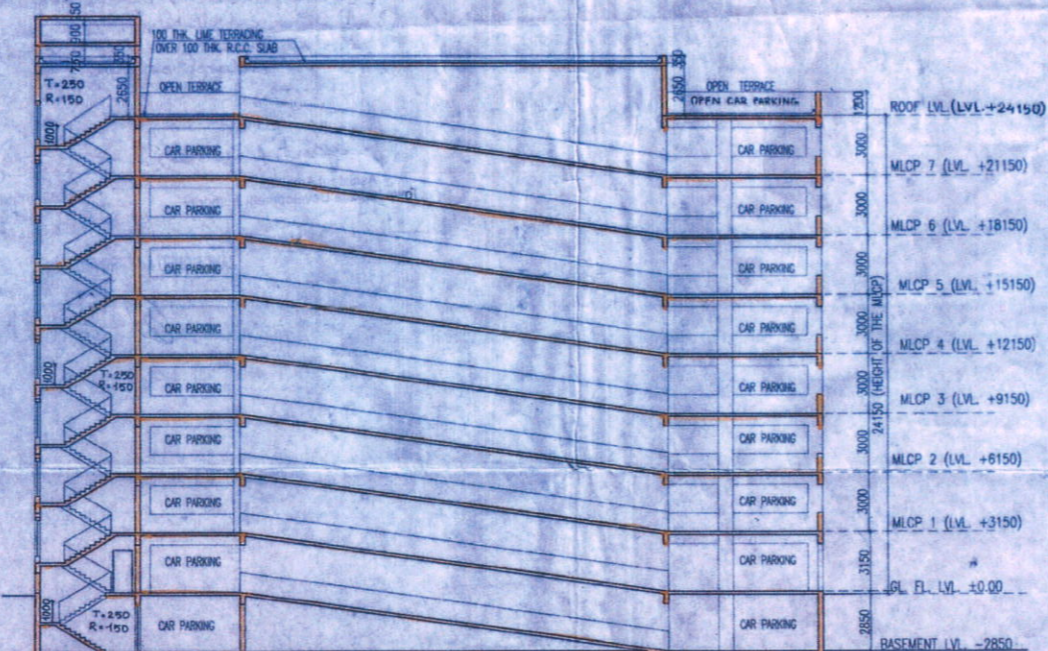
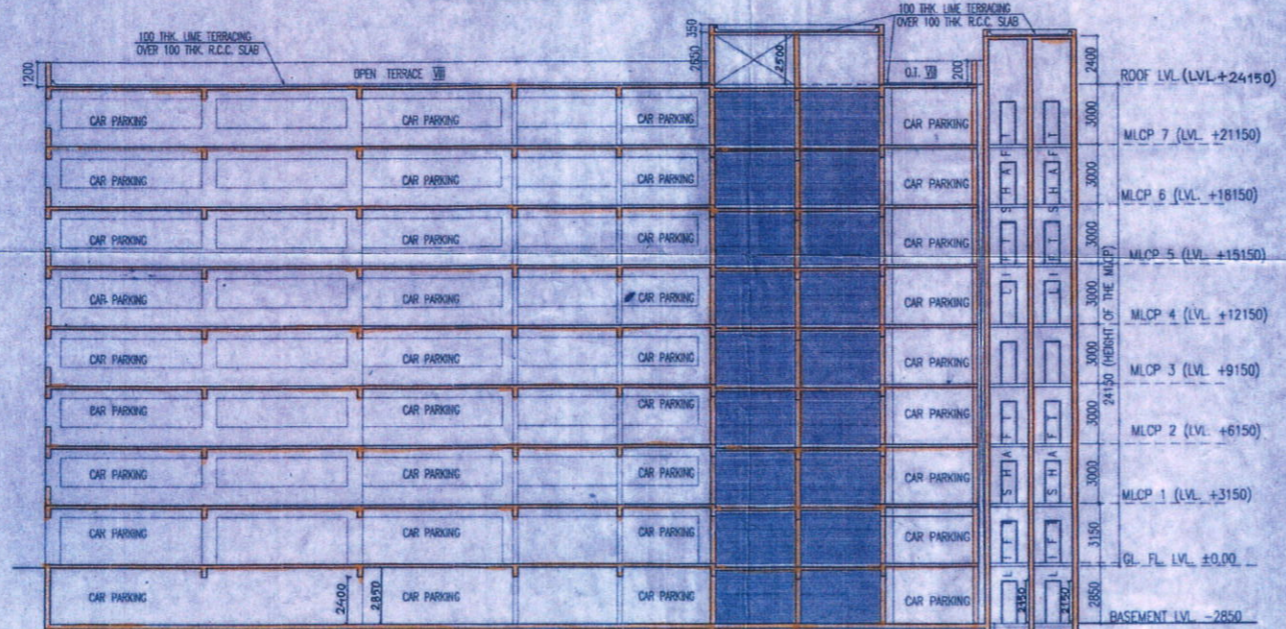


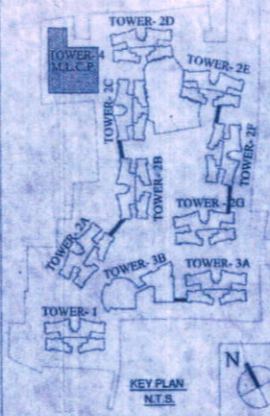
ELEVATION



SECTION- Q-Q



SECTION- R-R



KEY PLAN

SCHEDULE OF DOORS & WINDOWS			
NO	SILL	LINTEL	SIZE
D	-	2150	1200 X 2150
D1	-	2150	900 X 2150
D1a	250	2300	900 X 2050
D2	-	2150	750 X 2150
D2a	-	2150	700 X 2150
D3	-	2150	1000 X 2150
DW	-	2400	2985 X 2400
DW1	-	2400	2345 X 2400
SD	-	2150	2100 X 2150
SD1	-	2150	1500 X 2150
F.C.D	-	2150	1125 X 2150
F.C.D1	-	2150	1198 X 2150
W	350	2150	2400 X 4800
W1	350	2150	2100 X 1800
W2	350	2150	1200 X 1800
W3	350	2150	850 X 1800
W4	1100	2150	1200 X 1050
W5	1250	2150	800 X 900
W6	350	2150	1200 X 1800
W7	750	2150	700 X 1400
SW	750	2450	1198 X 1700

NAME OF OWNER  
NAME OF THE COMPANY

1. M/s. Adya Real Estates Private Limited
2. M/s. Allshah Supply Private Limited
3. M/s. Anchor Vanija Private Limited
4. M/s. Anratma Advisory Private Limited
5. M/s. Anratma Dealers Private Limited
6. M/s. Anukaran Supply Private Limited
7. M/s. Aravali Hirise Private Limited
8. M/s. Arch Vanija Private Limited
9. M/s. Arpana Consultancy Private Limited
10. M/s. Arpana Tie Up Private Limited
11. M/s. Artline Homes Private Limited
12. M/s. Artline Projects Private Limited
13. M/s. Artline Real Estate Private Limited
14. M/s. Average Complex Private Limited
15. M/s. Average Housing Private Limited
16. M/s. Average Infracon Private Limited
17. M/s. Average Nirman Private Limited
18. M/s. Average Projects Private Limited
19. M/s. Basudev Enclave Private Limited
20. M/s. Basudev Housing Private Limited
21. M/s. Bluebird Tie Up Private Limited
22. M/s. Booster Heights Private Limited
23. M/s. Booster Hirise Private Limited
24. M/s. Brijbhumi Agents Private Limited
25. M/s. Brijbhumi Tie Up Private Limited
26. M/s. Citywings Vyapaar Private Limited
27. M/s. Crossway Heights Private Limited
28. M/s. Crossway Nirman Private Limited
29. M/s. Dayanidhi Suppliers Private Limited
30. M/s. Delta Vyapaar Private Limited
31. M/s. Dhanganga Hirise Private Limited
32. M/s. Dhanganga Infracon Private Limited
33. M/s. Dhanganga Realty Private Limited
34. M/s. Dhanganga Residency Private Limited
35. M/s. Dreamland Hirise Private Limited
36. M/s. Elegant Nirman Private Limited
37. M/s. Gajbadan Vinimay Private Limited
38. M/s. Gajgami Buldcon Private Limited
39. M/s. Gajgami Constructions Private Limited
40. M/s. Gajgami Hirise Private Limited
41. M/s. Gajgami Realty Private Limited
42. M/s. Gajmukhi Enclave Private Limited
43. M/s. Gajmukhi Homes Private Limited
44. M/s. Gajmukhi Infracon Private Limited
45. M/s. Gajmukhi Nirman Private Limited
46. M/s. Gajmukhi Projects Private Limited
47. M/s. Gajmukhi Real Estate Private Limited
48. M/s. Ganesh Tracom Private Limited
49. M/s. Ganeshvani Promoters Private Limited
50. M/s. Greentop Nirman Private Limited
51. M/s. Guidance Vyapaar Private Limited
52. M/s. Gullmarg Vyapaar Private Limited
53. M/s. Hanurang Tie Up Private Limited
54. M/s. Indivar Tracom Private Limited
55. M/s. Jainendra Distributors Private Limited
56. M/s. Jainendra Marketing Private Limited
57. M/s. Jainendra Merchants Private Limited
58. M/s. Jaldham Advisory Private Limited
59. M/s. Jaldham Tie Up Private Limited
60. M/s. Jhimil Sales Private Limited
61. M/s. Jhimil Vyapaar Private Limited
62. M/s. Jinay Merchants Private Limited
63. M/s. Juhl Marketing Private Limited
64. M/s. Kalakriti Enclave Private Limited
65. M/s. Kalakriti Homes Private Limited
66. M/s. Kalakriti Housing Private Limited
67. M/s. Kalakriti Properties Private Limited
68. M/s. Kalakriti Realty Private Limited
69. M/s. Kanyabi Consultants Private Limited
70. M/s. Lifelong Enclave Private Limited
71. M/s. LimeLight Hirise Private Limited
72. M/s. Linkrose Constructions Private Limited
73. M/s. Linkrose Housing Private Limited
74. M/s. Linkrose Residency Private Limited
75. M/s. Manobal Dealer Private Limited
76. M/s. Manobal Vanija Private Limited
77. M/s. Matrix Sales Private Limited
78. M/s. Maxflow Barter Private Limited
79. M/s. Moonlife Constructions Private Limited
80. M/s. Moonlife Nirman Private Limited
81. M/s. Moonlife Residency Private Limited
82. M/s. Mridul Advisory Private Limited
83. M/s. Newwave Merchants Private Limited
84. M/s. Original Realty Private Limited
85. M/s. Panghat Supply Private Limited
86. M/s. Pawanputra Barter Private Limited
87. M/s. Pawanputra Sales Private Limited
88. M/s. Prabakar Barter Private Limited
89. M/s. Prajapati Commercial Private Limited
90. M/s. Prajapati Dealer Private Limited
91. M/s. Prensagar Advisory Private Limited
92. M/s. Prensagar Tie Up Private Limited
93. M/s. Prime Rose Marketing Private Limited
94. M/s. Radial Housing Private Limited
95. M/s. Radial Residency Private Limited
96. M/s. Ringhim Commodities Private Limited
97. M/s. Rosemary Distributors Private Limited
98. M/s. Rosemary Tie Up Private Limited
99. M/s. Sadabahar Vyapaar Private Limited
100. M/s. Sagun Advisory Services Private Limited
101. M/s. Sanjivani Vanija Private Limited
102. M/s. Sangam Vyapaar Private Limited
103. M/s. Sawarg Vanija Private Limited
104. M/s. Shivasthal Dealers Private Limited
105. M/s. Shivasthal Sales Private Limited
106. M/s. Siddha Style Barter Private Limited
107. M/s. Sidhant Suppliers Private Limited
108. M/s. Silverline Vinimay Private Limited
109. M/s. Skylink Merchants Private Limited
110. M/s. Spandan Suppliers Private Limited
111. M/s. Splendor Vyapaar Private Limited
112. M/s. Style Merchants Private Limited
113. M/s. Sukhjit Vyapaar Private Limited
114. M/s. Sunmart Vyapaar Private Limited
115. M/s. Sunshine Barter Private Limited
116. M/s. Superior Complex Private Limited
117. M/s. Superior Hirise Private Limited
118. M/s. Surdhuani Advisory Private Limited
119. M/s. Sursarita Advisory Services Private Limited
120. M/s. Sursarita Consultants Private Limited
121. M/s. Swastik Barter Private Limited
122. M/s. Terspanth Consultancy Services Private Limited
123. M/s. Timeless Real Estate Private Limited
124. M/s. Tipten Vyapaar Private Limited
125. M/s. Vidhata Advisory Services Private Limited

Authorized Signatory

SIGNATURE OF OWNER

CERTIFICATE OF STRUCTURAL ENGINEER

CERTIFY THAT THE STRUCTURAL DRAWING AND DESIGN OF BOTH THE FOUNDATION AND SUPERSTRUCTURE OF THE BUILDING / BUILDINGS HAS BEEN MADE CONSIDERING THE SOIL TEST REPORT, AS PER THE RULES AND REGULATIONS MADE UNDER THE ACT AND ALSO CONSIDERING ALL POSSIBLE LOADS, SEISMIC LOAD AND THE MOMENTS GENERATED BY THE PROPOSED STRUCTURE AS PER THE BUREAU OF INDIAN STANDARD AND NATIONAL BUILDING CODE OF INDIA AND CERTIFIED THAT IT IS SAFE AND STABLE IN ALL RESPECT AND THESE PROVISIONS SHALL BE ADHERED TO DURING THE CONSTRUCTION.

SANJIV J. PAREKH  
M.E. (STRUCTURAL), M.E. (CONST. ENGR.),  
I.C.E. (E-1018202-4)  
STER/NKDA / 10 / 00030

SIGNATURE OF STRUCTURAL ENGG.

CERTIFICATE OF ARCHITECT

I CERTIFY THAT ALL THE ARCHITECTURAL DRAWINGS OF THE PROJECT AT R.S.DAG NOS 473,474, 475,476,477,478,479, 480, 481(P), 483, 488, 490, 491, 492,493, 494, 495, 496, 497, 499, 500, 501(P), 502(P), 503(P), 504(P), 506(P), 507(P), 508(P), 470(P), 526(P), 531,532,533&534/716(P), OF MOUZA - BHATENDA, J.L. NO.28 HAVE BEEN PREPARED BY ME COMPLYING WITH THE NEW TOWN KOLKATA PLANNING AREA (BUILDING) RULES, 2014. I ALSO CERTIFY THAT THE PLANS AND DRAWINGS PREPARED BY ME COMPLYING WITH ALL THE PROVISIONS REGARDING THE FIRE PROTECTION AS PER THE PREVAILING NATIONAL BUILDING CODE OF INDIA I SHALL BE HELD RESPONSIBLE IF ANY INCORRECT INFORMATION IS FURNISHED BY ME OR ANY VIOLATION OF PROVISIONS OF THESE RULES OR THE PREVAILING NATIONAL BUILDING CODE IS FOUND IN ANY OF THE DRAWINGS AND DOCUMENTS, SIGNED BY ME AND SUBMITTED TO THE SANCTIONING AUTHORITY FOR OBTAINING SANCTION.

MOHAIL AGRAWAL  
Regd. Architect  
New Town Kolkata Development Authority  
Enrollment No. 6CH/10/24/10/00022

SIGNATURE OF ARCHITECT

CERTIFICATE OF GEO - TECHNICAL ENGINEER

IT IS CERTIFIED THAT THE COMPREHENSIVE GEO-TECHNICAL REPORT ON SOIL INVESTIGATION HAS BEEN PREPARED BY ME FOR DESIGN AND CALCULATION OF THE FOUNDATION BY ANALYZING THE SOIL SAMPLES FOR ESTIMATING THE BEARING CAPACITY OF THE SOIL ON WHICH FOUNDATION OF THE STRUCTURE WILL BE CONSTRUCTED. I SHALL ALSO CHECK THE NATURE OF THE SOIL AFTER EXCAVATION AT SITE SO THAT FOUNDATION IS EXTENDED UP TO THE APPROPRIATE DEPTH THAT HAS BEEN PROPOSED IN THE GEO-TECHNICAL REPORT.

SHYAMAL KUMAR MITRA, B.E. (CIVIL)  
GEO-TECHNICAL ENGINEER  
ENROLLMENT NO. STER/NKDA/09/00018

SIGNATURE OF GEO - TECHNICAL ENGINEER

Subir Ranjan Sarkar  
Regd. Town Planner  
New Town Kolkata Development Authority  
Enrollment No.: TPER/NKDA/10/00036

SIGNATURE OF TOWN PLANNER OR URBAN DESIGNER

SANJIB GUHA  
BSC. (E), FIE-(F-15654-5)  
CHARTERED ENGINEER  
STRV/NKDA/16/00003

SIGNATURE OF STRUCTURAL REVIEWER

ELEVATION, SEC-RR & QQ

TOWER-4 (M.L.C.P.)

PROJECT:  
REVISED (G-II), (B-G-VII) AND (G-KIX) STORED RESIDENTIAL BUILDINGS AT MOUZA - BHATENDA, R.S.DAG NOS 473, 474, 475, 476, 477, 478, 479, 480, 481, 483, 488, 490, 491, 492, 493, 494, 495, 496, 497, 499, 500, 501(P), 502(P), 503(P), 504(P), 506(P), 507(P), 508(P), 470(P), 526(P), 531, 532, 533 & 534/716(P), RECORDED IN L.R. BHATENDA NOS-2821, 3233, 3281, 3283, 3248, 3285, 3286, 3287, 2849, 2848, 2887, 2846, 3234, 3315, 2855, 2856, 2857, 2858, 2859, 3318, 3317, 3412, 3341, 3340, 2803, 2806, 2805, 2802, 2801, 2800, 2804, 2807, 3302, 3304, 3306, 3301, 3303, 3305, 3312, 2853, 3136, 3307, 3309, 3311, 3310, 3208, 3313, 3411, 3314, 3288, 3287, 2830, 2829, 2828, 2827, 2826, 2825, 2845, 2844, 2843, 2842, 2841, 2840, 2839, 2838, 2837, 2836, 2835, 2834, 2833, 2832, 3240, 2815, 3316, 2854, 2809, 2808, 2814, 2819, 2850, 2851, 2852, 2822, 2823, 2824, 2796, 2797, 2798, 2799, 2816, 2817, 2818, 2810, 2811, 2812, 2813, 2792, 2793, 2794, 2795, 2820, 3073, 3072, 3238, 3236, 3237, 3235, 3239, 3296, 2860, 2861, 2862, 2863, 2864, 3071, 3265, 4092, 3279, 3070, 2866, 2831 & 2865, MOUZA - BHATENDA, J.L. NO. 28 PS-RAJARHAT, WITHIN THE JURISDICTION OF RAJARHAT BISHNUPUR NO. 1 GRAM PANCHAYAT, DIST. - NORTH 24 BANGALANS, PREVIOUSLY SANCTIONED AND APPROVED BY EXECUTIVE OFFICER OF RAJARHAT PANCHAYAT SAMITY, DATED 15/12/15.

ARCHITECTS			
AGRAWAL & AGRAWAL		KOLKATA	
SCALE	DATE	SHEET NO.	CHECKED
1 : 200	06.12.16	40 OF 41	ARAB SHILA

20/41

ARCHITECT: MONAL AGARWAL Enrollment No: ACHA/NKDA/10/00020  
 CIVIL/STRUCTURAL ENGINEER: SANJIV J. PAREKH Enrollment No: STER/NKDA/10/00030  
 GEO-TECHNICAL ENGINEER: SHYAMIL K. MITRA Enrollment No: STER-HIDU/09/00016  
 TOWN PLANNER/URBAN DESIGNER: SUBIR KANJAN SARKER Enrollment No: TPER/NKDA/10/00036  
 STRUCTURAL REVIEWER: SANJIB GUHA Enrollment No: STRV/NKDA/15/00013

STRUCTURAL DRAWINGS, STRUCTURAL DESIGN CALCULATIONS & SOIL TEST REPORT ARE NOT CHECKED AND KEPT FOR RECORDS ONLY.

Note: This NOC has been issued on the basis of documents submitted by the applicant and forwarded by the Addl. Executive Officer, North 24 Panchayat 26a Parishad. If there was material misrepresentation of fact or fraudulent act or any act of suppression of fact in connection with the above project including the concerned land, plans, drawings, design etc., then, this NOC shall stand cancel.

**NEW TOWN KOLKATA DEVELOPMENT AUTHORITY**  
 No Objection Certificate for  
 Sanction of Building Plan for Construction Purpose

Memo No. 3622(3)/NKDA/APS-04(3)/2014

Date: 20.07.2018

Building Particulars Proposed Revised (G+1), (B+G+1/11) & (G+K1 X)  
 3 Storeed Residential Building at 10/20/21, Abhaya da Jha 28  
 P.S. Rajarhat, North 24 Pgs

Note: - The proposal is recommended for approval subject to realisation of environment clearance.

Sanyanti Majumdar  
 Assistant Architect  
 New Town Kolkata Development Authority

S. Chatterjee  
 SUKRI CHATTERJEE  
 Chief Architect  
 New Town Kolkata Development Authority

SANCTIONED & APPROVED

20/08/18  
 Executive Officer  
 Rajarhat Panchayat Samity